



AeroCollect[®] ESSENTIAL INFORMATION

“EASY AND EARLY IDENTIFICATION OF POULTRY PATHOGENS BY AIR SAMPLING”
(WWW.AEROCOLLECT.DK)

This method enables the rapid and efficient capture of bacteria and viruses directly from the air, allowing immediate molecular analysis (PCR and Sanger Sequencing) without any need for prior sample preparation.

Hence, AeroCollect[®] is an excellent flock monitoring tool, easy and fast applicable with high throughput potential. Just choose your pathogens of interest!

ALL ADVANTAGES AT A GLANCE:

- easy to use, no prior experience necessary
- quick and cost effective
- early detection of multiple pathogens possible
- excellent monitoring tool for your flock

www.aerocollect.dk

ALL YOU NEED IS:

- AeroCollect[®] Device*
- Sample chambers*
 - you can order devices and chambers directly at AeroCollect info@aerocollect.dk / www.aerocollect.dk



Picture www.aerocollect.dk



Sample insertion

Picture www.aerocollect.dk



Poultry Sampling

Picture www.aerocollect.dk

**both, the AeroCollect[®] device and the sample chambers have been designed so that they can be effectively disinfected for transport, using standard disinfectants such as 70% Ethanol solution. Please consider the transport of the AeroCollect[®] device between different locations carefully; the use of one device per farm is recommended to avoid any risk of contamination.*

HOW TO USE AeroCollect®

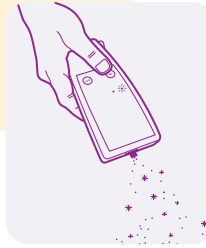
...ON THE FARM

1



Step 1: open sample chamber bag on sight to avoid prior contamination. Insert sample chamber (indicated direction by arrow)

2



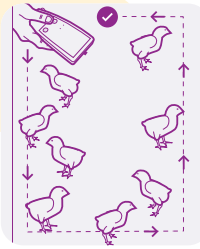
Step 2: start examination by pressing On (green)

3



Step 3: kick up dust from floor to facilitate more airborne particles

4



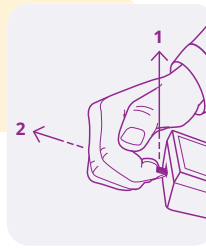
Step 4: sampling from entire house for at least 5 minutes by walking a route in the entire house

5



Step 5: stop examination by pressing OFF (red)

6



Step 6: remove the sample chamber and place it back in the slider bag.

Pictures www.aerocollect.dk



Video demonstration:



...IN THE LABORATORY

Most of the pathogens affecting poultry health on a flock level can be detected using the AeroCollect® method. The following panels are pre-selected based on years of experience in poultry health. Of course, individual parameters are also possible.

Further typing using PCR or Sanger sequencing may be possible depending on the pathogen load. Feel free to contact us about this!

1	IBDV-screening + IBDV typing (A1, A3, A7)
2	IBV-screening + IBV variants (please note that for this panel two equal sample chambers from the same location and time point must be sent)
3	CAstV + ANV + FAdV + CAV + ARV
4	MG + MS + TRT + EDS

If you have any further questions regarding lab analysis performed by using AeroCollect® don't hesitate to contact us!

www.anicon.eu/veterinary-diagnostics-poultry



ANICON®

SAN Group Biotech Germany GmbH
Muehlenstraße 13 • 49685 Hoeltinghausen • Germany
Tel.: +49 4473-9438 30 • Fax: +49 4473-9438 791
office-de@san-group.com • www.anicon.eu • www.san-vet.com

SAN®
VET